



# The Rolling Thunder

## Soil & Water Conservation District

### Upcoming Meetings

The next SWCD District Board Meeting is Tuesday, September 8th at the SWCD Office, 8:30 am, 302 Scott Street, Moro, OR 97039.



### Office Update:

USDA Service Centers in Oregon will continue to be open for business by appointment only and field work will continue with appropriate social distancing. While our program delivery staff will continue to come into the office, they will be working with our producers by phone and using online tools whenever possible. All Service Center visitors wishing to conduct business with the Farm Service Agency, Natural Resources Conservation Service, or any other Service Center agency are required to call their Service Center to schedule a phone appointment. If the Service Center is closed, producers can receive assistance from the closest alternate Service Center by phone.

### Scholarship Award:

The Sherman County Soil & Water Conservation District is pleased to announce the recipients of this year's Sherman Co. SWCD Scholarship. Applicants must have chosen a career in some area of agriculture or vocational education and be a graduating high school senior of Sherman County High School or College/Higher Education Student and hold a 2.5 GPA or better. Congratulations to Meghan Belshe, Savannah Moe, Jordan Barrett, Max Martin, Wyatt Stutzman and Kevin Hart! For more information about the scholarship program contact the office at 541-565-3216 or email [amanda.whitman@or.nacdn.net](mailto:amanda.whitman@or.nacdn.net).

## Sherman County Area Watershed Council

### Upcoming Meetings

The next Watershed Council Meeting will be held Tuesday September 8th, 2020 at 8:00 am at the SWCD Office.



### Small Grant Funding Available!

We have Oregon Watershed Enhancement Board (OWEB) funding available, especially for producers on the Deschutes side of the county. Projects up to \$10,000 have a 75% cost share and projects \$10,001- \$15,000 have a cost share of 50%.

Eligible projects include:

- Livestock and wildlife water developments
- Riparian planting
- Cross fence
- Range seeding
- In-stream restoration
- Cropland erosion control

### Youth Camp

SWCD and Watershed Council staff brought the stream table to Youth Camp and taught the students about erosion, watershed health, conservation and having fun in streams.



### Contents

Service Center Updates	1-3
Riparian Restoration Grants	2
Rush Skeletonweed	3
Experiment Station Weather	4
Lower Deschutes CWMA	5
Local Advertisements	5
Conservation Calendar	6

# Farm Service Agency



**Conservation Reserve Program (CRP) Emergency Grazing**—Authorized to provide relief to livestock producers in areas affected by a severe drought or similar natural disaster on qualifying CRP acres. Emergency authorization is provided by either a national FSA office authorization or by a state FSA committee determination utilizing the U.S. Drought Monitor. Please call to begin the process for requesting emergency grazing authorization. Livestock cannot be turned out on general CRP without advanced authorization through the FSA County Office. Grazing is not authorized on any CREP or CP25 stands.

**Crop Records** -As harvest quickly approaches, Farm Service Agency reminds producers to ensure that their crop records match at Farm Service Agency, their Crop Insurance, and the local Coop. Please ensure that all three have the same shares on crop, that your acreages are reported, and that the local coop has your new or changed entities in place before you deliver the crop. Please contact the FSA office if you have questions or need us to send a copy of your acreage report to the Coop or the insurance agent.

**Moro USDA Service Center has been approved for Phase 2 re-opening. We can now accept customers in the office by appointment only. PLEASE call ahead to schedule a time to come in to the office.**

**County Committee Elections Nominations — Accepting COC nominations for LAA2 Middle Sherman County, for 2020 FSA County Committee Deadline August 1**

**CFAP: (Coronavirus Food Assistance Program) – APPLY NOW – Applications due August 28, 2020**

**LIP/ELAP Losses:** Livestock and/or feed losses must be reported within 30 days of loss event. Due to Sherman County being in D3, Extreme Drought, water hauling is now eligible for benefits. Call the office for more information.

**ARCPLC:** Agriculture Risk Coverage (ARC) and Price Loss Coverage (PLC) program sign up for 2020 must be completed by **June 30, 2020**.

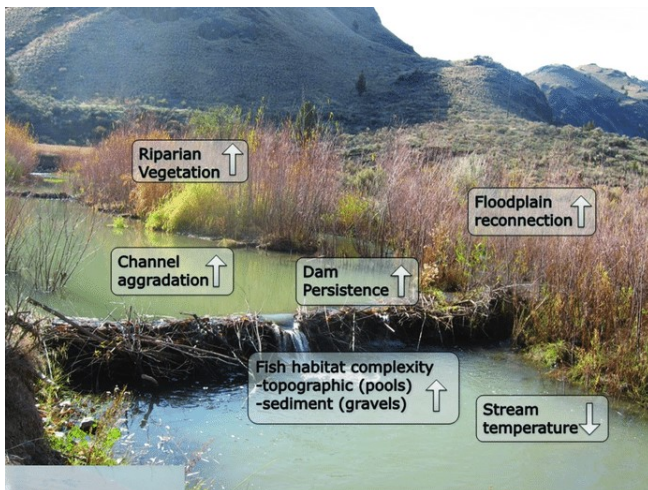
**Acreage Reporting** for Spring planted crops must be filed by **August 14, 2020** to be considered timely-filed. Please make an appointment to report your planting or destruction of a cover crop.

**CREP:** Sign up and re-enrollment runs through **August 21, 2020**. Please call for an appointment.

**ECP:** FSA reminds ECP participants to turn in receipts and completion status of fences burned in the 2018 wildfires

**LFP:** On May 5, 2020, Sherman County became eligible for the Livestock Forage Disaster program due to reaching D3, Extreme Drought status. Please gather livestock inventory information before scheduling your appointment.

## Riparian and Instream Restoration Grants



**Would you like the water in your streams to last longer? Do you want more vegetation growth in your streams, including trees? Would you like to reduce fire risk? Are your streambanks eroded? Do you want more wildlife to visit your property?** Low-tech methods are more **cost effective** than highly engineered methods. Rather than humans attempting to engineer and maintain a perfect system, this technique uses the **ecosystem to do the work**. Several common techniques in low-tech restoration include adding in-stream structures to add material to streams, slow the water, and raise the water table by allowing more time for infiltration. These are often combined with planting fast growing native trees and shrubs such as cottonwoods and willows to stabilize banks, shade streams, and provide wildlife habitat. Our streams, ecosystems,

and native fish evolved with beaver creating dams and floodplains.

The SWCD will be writing grants for interested landowners to apply for funding for in-stream structures, riparian planting, and more. Contact us at 541-565-3216 ext 101 or 541-565-3216 ext 106 to learn more.

# Natural Resource Conservation Service

USDA Service Centers in Oregon will continue to be open for business by phone appointment only and field work will continue with appropriate social distancing. While our program delivery staff will continue to come into the office, they will be working with our producers by phone, and using online tools whenever possible.

NRCS: 541-565-3551 ext 5

NRCS DelRae cell: 541-707-7045

NRCS Emily cell: 541-707-7058



## Plant spotlight: Oregon Grape

Oregon grape holly (*Mahonia aquifolium*) is a handsome, 3- to 6-foot ornamental shrub that can play a number of roles in the garden. The shrub's appearance changes with the seasons. In spring the branches bear long, hanging clusters of lightly fragrant, yellow flowers which give way to dark blue berries in summer. New spring foliage is bronze in color, turning green as it matures. In fall the leaves take on a pleasing purplish cast.

Another grape holly plant, creeping *Mahonia* (*M. repens*) makes an excellent ground cover. With foliage, flowers and berries similar to the Oregon grape holly shrub, creeping grape holly has all the features of the taller form in a plant that grows only 9 to 15 inches tall. The plants spread by means of underground rhizomes, and seedlings often emerge under the plant where berries fall to the ground. Although the berries are too sour to suit human taste buds, they are safe to eat and can be used in jellies and jams. Birds love them, and disburse the seeds as they feed.



### Oregon Grape Jam recipe

3-5 lbs of washed, stemmed Oregon grapes (this is roughly equal to about 2 quarts of berries)

3 cups of water

5 cups of sugar

1 pkg of liquid pectin

1. Crush the grapes and add the water. Do not over mix, or it may alter the natural pectin in the fruit, making it frothy.
2. Boil for 10 minutes, mashing the berries a bit.
3. Place the mixture in a colander lined with cheese cloth. Let this drain a few hours, or until you have about 4 cups of juice. Discard the debris and cheesecloth.
4. Mix the juice with the sugar and bring to a rapid boil.
5. Add the pectin. Return to a full boil for one minute.
6. Place into warm sterilized jars, place the lids on, and put the jars into a boiling water bath for 10 minutes.
7. Remove the jars from the water and let set overnight.

## Skeletonweed

### Rush Skeletonweed Control:

Late summer is an ideal time to be looking for Skeletonweed. It is easy to spot as it stays greener longer into the summer while other plants fade. Milestone is an effective chemical to combat skeletonweed and suppresses cheatgrass release after skeletonweed control. When spraying, remember to spray a circle around the plant in addition to the plant to prevent rhizomes from coming up.

The SWCD is also targeting skeletonweed using a Gall Midge (*Cystiphora schmidtii*) and Gall Mite (*Aceria chondrillae*). While the galls do not kill the plant, it prevents it from flowering and therefore slows the spread of skeletonweed. Contact the SWCD if you would like gall midges and gall mites to control your skeletonweed. Biocontrol agents are best used in areas with large infestations and areas that are difficult to get to with a sprayer.



# Experiment Station Weather

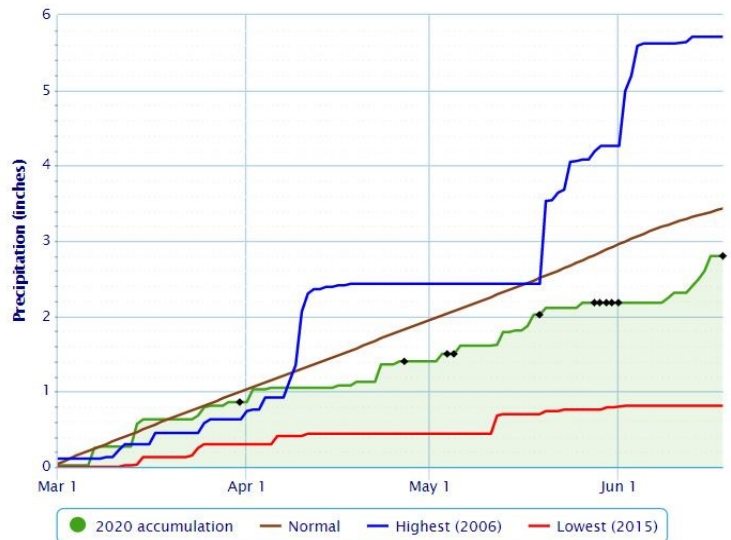
## Air Temperature

Month	Highest Temp °F	Average Max Temp °F	Lowest Temp °F	Average Min Temp °F
March	61	48	21	29
April	74	58	26	34
May	86	64	29	41

## Soil Temperature

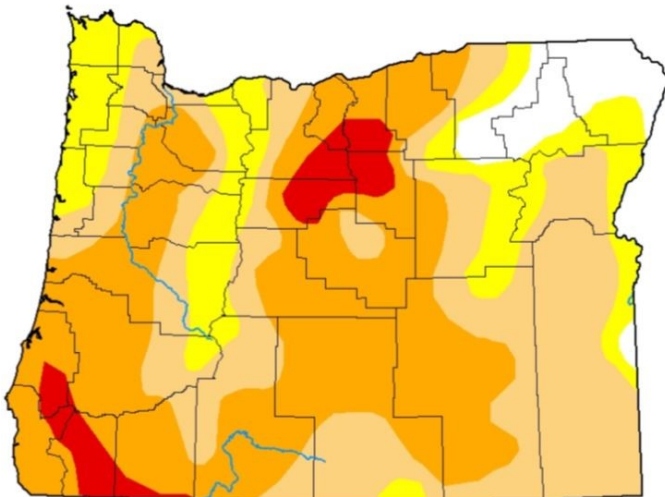
Month	4" Average Max Temp °F	4" Average Min Temp °F	12" Average Temp °F
March	49	44	42
April	59	52	49
May	69	61	58

## Accumulated Precipitation

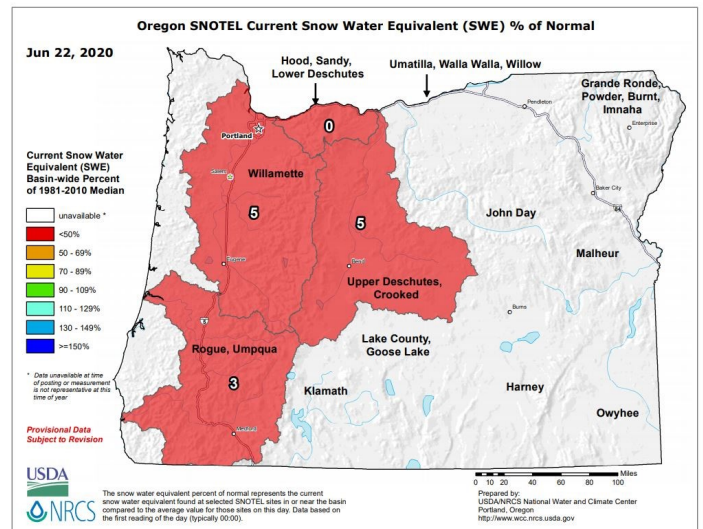


Powered by ACIS

## Oregon drought map



## Oregon Snowpack



# Lower Deschutes Cooperative Weed Management

The Lower Deschutes Cooperative Weed Management Area (CWMA) is a partnership among various public land managers, land owners, and users within the community of the Deschutes River, with a focus on improving the vegetative habitat within the Deschutes River corridor

The 2020 season started in March. The CWMA has been in the field visiting and collecting data at established vegetative monitoring sites, promoting outreach and educational materials regarding noxious weeds indicative of the area, and combining efforts with the various partners on treating noxious weeds within the 48 mile project area of the Lower Deschutes River. Despite some setbacks and delays of season plans, the CWMA is eager and optimistic at finishing the season strong. In addition to treatment efforts, focus in the peak of the summer will be to continue the surveying of various canyons within the River corridor. Areas with noxious weeds will be identified and added to the comprehensive list of mapped areas the CWMA possesses. Fall will be a great time for follow up treatments on various noxious weed species, including Rush skeletonweed. Depending on environmental factors such as soil moisture content and temperature, new rosettes may be visible as early as September or October.



Feedback, questions, comments, and concerns are always welcomed. Email Dan Son, CWMA Program Manager, at [dson@shermancounty.net](mailto:dson@shermancounty.net) or call at 503-858-4191.

## Local Advertisements

**M.C.G.G.**  
**Morrow County Grain Growers Inc.**

Wasco: 1-800-824-7185  
Lexington: 1-800-452-7396  
Fax: 541-442-5780

[www.mcgg.net](http://www.mcgg.net)

**BUSINESS OWNERS!!!!**

Are you interested in showcasing your business cards in our newsletter? Advertisements are \$20 per issue or \$75 for the year! Issues are dispersed quarterly. For those of you who previously advertised, if you haven't renewed don't get left out! Call our office today!

**Bank of Eastern Oregon**

**AMY MCNAMEE**  
Commercial Loan Officer

Office (541) 565-3712 P.O. Box 444  
Fax (541) 565-3470 Moro, OR 97039  
[amcnamee@beobank.com](mailto:amcnamee@beobank.com) [www.beobank.com](http://www.beobank.com)

**Mobley Fencing, LLC**  
CCB #165680

Livestock Fencing • Chain Link  
Vinyl Fencing • Steel Fencing  
Retaining Walls

**Ron Mobley, owner**

P.O. Box 362 541.333.2224  
Kent, OR 97033 [rmobley@gorge.net](mailto:rmobley@gorge.net) Cell 541.980.2716

**DEGRANGE Construction, LLC.**

OR LIC# 161930  
WA LIC# DEGRACL961R3

Ken DeGrange cell: (541) 993-0442  
Mike DeGrange cell: (541) 993-1963

office: (541) 442-5712 • fax: (541) 442-8588  
PO BOX 222 • Wasco, OR 97065 • [ddl@saw.net](mailto:ddl@saw.net)

**MCP Mid Columbia Producers, Inc.**  
[www.mcpcoop.com](http://www.mcpcoop.com)  
[contactmcp@mcpcoop.com](mailto:contactmcp@mcpcoop.com) Supervised Fuels

Grain • Fuel • Oil • Seed • Farm Stores

Mid Columbia Producers, inc. operates three offices to better serve our customers. Our main office is located in Moro, Oregon.

Moro Office | 2003 First Street | Moro, OR 97039 | 800-325-9327  
Bend Office | 913 1st Street | Bend, OR 97701 | 888-616-0690  
Hermiston Office | 345 N 1st Pl | Hermiston, OR 97838 | 541-289-5015

**RANDY FRANCIS**  
President

800 West 6th street #8  
The Dalles OR 97058  
541-993-8586  
[randy@bigleague.construction](mailto:randy@bigleague.construction)  
[www.bigleague.construction](http://www.bigleague.construction)  
OR LIC# 221025

**BLC**  
WA LIC# REG. CC BIGLELC821NH

**P.K.P. Enterprises, Inc.**

**Pat Powell**  
President

95005 Hwy 206  
PO Box 440  
Wasco, OR 97065

Phone: 541-993-5098  
Fax: 541-442-5097

Rock • Trucking • Excavation  
[pepowellfarms@gmail.com](mailto:pepowellfarms@gmail.com)

CCB#46081

# ~ CONSERVATION CALENDAR ~

## July 3: Office Closed

August 1: Farmers Market, 10 am - 4 pm, Moro, OR

August 18-22: Sherman County Fair, Moro, OR

## September 7: Labor Day - Sherman SWCD Office Closed

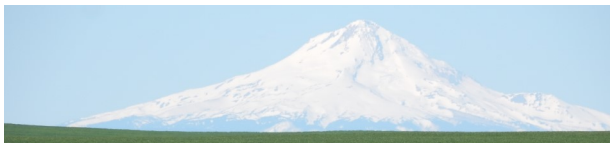
September 5: Farmers Market, 10 am - 4 pm, Moro, OR

September 8: Watershed Council Meeting, 8:00 am, SWCD office

September 8: Sherman County SWCD Board Meeting, 8:30 am, SWCD office

October 13: Sherman County SWCD Board Meeting, 8:30 am, SWCD office

December 1-4: Tri-State Grower Convention, Coeur D'Alene, ID



# ~ BOARD & STAFF ~

## SWCD Staff

Amanda Whitman, District Manager

Emily Freilich, Watershed Council Coordinator

Taryn Asmus, Watershed Program Assistant

## NRCS Staff

Del Rae Ferguson, District Conservationist

Emily Huth, Soil Conservationist

## Sherman County SWCD Board of Directors

Jesse Stutzman, Chair

Josh Hilderbrand, Vice Chair

Clint Moore, Treasurer

Thad Eakin, Secretary

Trevor Fields, Member



## Have a great 2020 wheat harvest!



We're on the Web! Don't forget to check us out for current news! [www.shermancountyswcd.com](http://www.shermancountyswcd.com) and [www.shermancountyswc.com](http://www.shermancountyswc.com)

We're also on Facebook!

The U.S. Department of Agriculture (USDA) prohibits discrimination in all its programs and activities on the basis of race, color, national origin, age, disability, and where applicable, sex, marital status, familial status, parental status, religion, sexual orientation, genetic information, political beliefs, reprisal, or because all or a part of an individual's income is derived from any public assistance program. (Not all prohibited bases apply to all programs.) Persons with disabilities who require alternative means for communication of program information (Braille, large print, audiotape, etc.) should contact USDA's TARGET Center at (202)720-2600 (voice and TDD). To file a complaint of discrimination write to: USDA, Director, Office of Civil Rights, 1400 Independence Avenue, S.W., Washington, D.C. 20250-9410 or call (800)795-3272 (voice) or (202)720-6382 (TDD). USDA is an equal opportunity provider and employer.

NONPROFIT ORG  
US POSTAGE PAID  
MORO, OR 97039  
PERMIT # 15

Sherman County SWCD  
P.O. Box 405  
Moro, OR 97039