

Volume 19, Issue 2

January 2019



# Soil & Water Conservation District

## Tree & Shrub Sale

The annual tree & shrub sale is planned for March 23, 2019 from 8:00 am to 12:00 pm at the Sherman SWCD office. Pre-order deadline is March 1st, see attached list for species and prices.



## Upcoming Meetings

The next District Meeting will be held February 12th, 2019 at 8:30 am at the SWCD Office, 302 Scott Street, Moro, OR. 97039.

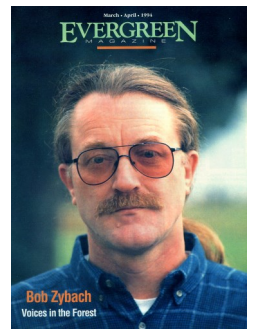
## Annual Meeting

Our Annual Meeting will be held on February 12th, 2019 at the Wasco School Event Center at 903 Barnett St, Wasco, OR. Social hour at 5:30 and dinner at 6:00 pm catered by Paradise Rose Chuckwagon. Cost is \$20, please RSVP by calling the Sherman SWCD or email Amanda.whitman@or.nacdn.net.



COWBOY CUISINE CATERING

The Annual Meeting presenter is Bob Zybach to discuss wildfire history in Oregon. He is an independent historian and has conducted forest science and public education research as president of his family business, NW Maps Co for the past 25 years. He is the program manager for Oregon Websites & Watersheds Project, INC (ORWW.org), a 501c(3) educational website focused on the scientific management of Oregon's natural and cultural resources. He has a PhD from Oregon State in Environmental Sciences, with a research focus on forest and wildfire history. He has written and lectured extensively on reforestation planning, wildfire history and economics, Oregon history, and the state's cultural and resources management. He has been widely interviewed by the public media on a diversity of topics related to cultural and natural resources.



## Previous Presentations / Interviews

Swanson, Scott 2007. "Scientist: Forest Conditions Spell Danger," local forest wildfire risk and a presentation for the South Santiam River Watershed Council.

Slinsky, Jim and Bob Zybach 2009b. "North America: The Last 15,000 Years & Now," national radio on interview focused on pre-contact North American Indian land management practices and their relationship to historical wildlife habitat patterns and to modern catastrophic wildfire events.

Kovski, Alan 2012. "Forest Service Tries to Blend Strategies of Forest Restoration, Fire Risk Reduction," Special Report: Natural Resources.

Larson, Lars and Bob Zybach 2013. "Barred Owls & Spotted Owls," Lars Larson Radio Show.

Larson, Lars and Bob Zybach 2014. "Global Warming & Oregon Wildfire History" Lars Larson Show.



SHERMAN COUNTY SWCD & WATERSHED COUNCIL

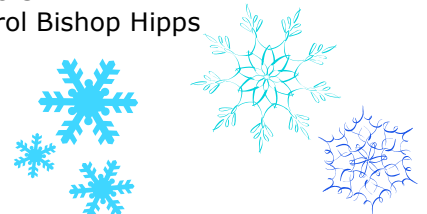
# The Rolling Thunder

## Contents

Service Center Updates	1-2
Odds and Ends	2
Lower Grass Valley Canyon Weed Survey	3
Experiment Station Weather	4
Lower John Day Working Group Meeting	5
Local Advertisements	5
Conservation Calendar	6
Tree and Shrub Sale List / Order Form	insert

*"When it snows, you have two choices: shovel or make snow angels."*

~Carol Bishop Higgs



# Sherman County Area Watershed Council

## Upcoming Meetings

The next Watershed Council meeting is February 12th, 2019 at 8:00 am at the Sherman SWCD Office.



## Natural Resource Conservation Service

### Staff Changes

The conservation office would like to say thanks for the months of service put in by Misty Strayhorn while detailed as the District Conservationist and wish her well in her continued work for NRCS in Wasco County. While NRCS hires a new District Conservationist, Del Rae Ferguson, NRCS Range Conservationist from Condon, will be the acting District Conservationist.



### Government Shutdown

NRCS, Sherman SWCD, and Watershed Council, continue to be open for business during the Government shutdown. NRCS has a combination of funds from the appropriations prior to December 22, 2018, and mandatory program funds from the signing of the Agriculture Improvement Act of 2018 to cover continuing operations and service to our customers.

## Farm Service Agency

### Government Shutdown

Due to the continued government shutdown, FSA is closed for business. NRCS and SWCD staff are able to take forms and paperwork for FSA and can date stamp and retain documents for FSA for the duration of the shut down.

### Programs

Market Facilitation Program (MFP) offers price support for wheat producers. The signup deadline was January 15, 2019, however Ag Secretary Sonny Perdue made an announcement that the deadline would be extended "for a period of time equal to the number of business days FSA offices were closed, once the government shutdown ends."



Livestock Forage Program (LFP) compensates livestock owners for grazing losses due to drought in Sherman County. Signup deadline is January 30, 2019.

If you are applying for 2018 programs, please contact our office to ensure that you have a complete and accurate acreage report for your farm(s) on file. A certified acreage report serves as the foundation for FSA program participation. Late-filed 2018 acreage reports will only be accepted within one year of the crop's acreage reporting deadline and are subject to a late-file fee. Grazing, forage and fall-planted small grain acreage reporting deadline was December 15.

For all FSA programs, please remember to call for an appointment or to double check you are enrolled in the program(s) you would like to participate in. FSA staff will not be making individual phone calls for program participation.

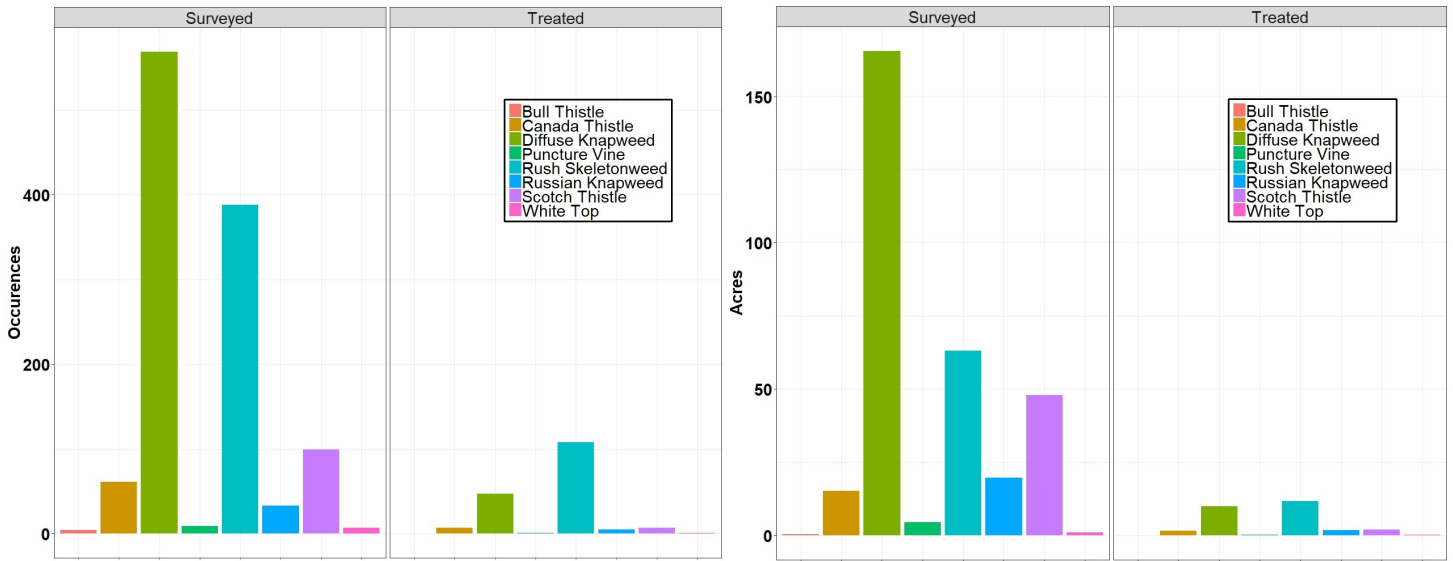
## Odds & Ends

- The SWCD and NRCS are looking for a volunteer (s) to offer up their shop this winter for our annual After Hours Meeting. Please consider helping your local conservation office so we can help you! Please contact the SWCD office at 541-565-3216.
- The SWCD still has plenty of funding available for county cost share grants to address any resource concerns you may have. Examples of previous projects include reshaping terraces to improve water storage capacity and ease of farming, spring developments to improve livestock distribution and water access, improving haul roads to decrease dust and water erosion, and cross fencing to improve livestock distribution. We are here to help with your conservation needs, so call or come on in to our office and get signed up today! 541-565-3216
- A Range Drill is available to landowners/operators to rent from the SWCD for range restoration, pasture seeding or grass seeding. If you would like to rent the range drill call the office (541-565-3216) to make an appointment.



# Lower Grass Valley Canyon Weed Survey

Sherman County SWCD and Watershed Council conducted surveys for noxious weeds in the Lower Grass Valley Canyon (from Hay Canyon to the John day River) during 2017 and 2018 with a large grant through the Oregon Watershed Enhancement Board (OWEB). Riparian areas and rangeland uplands across 9,370 acres of private ownership not enrolled in USDA's Conservation Reserve Program (CRP) or Conservation Reserve Enhancement Program (CREP) were surveyed. The Sherman County Weed District was contracted out to complete these surveys and also applied herbicide spot treatments with Milestone over 22.75 acres in 2018. Surveys documented 1,170 occurrences of eight different noxious weed species covering an estimated 370 acres. Documented weeds were on the Sherman County A, B, & C weed lists and the State B list including, Rush Skeletonweed, Diffuse and Russian Knapweeds, Scotch, Canada, and Bull Thistles, along with White Top and Puncture Vine. Noxious weeds on the A list endanger the overall economic well being of the county with limited distribution where eradication is feasible, weeds on the B list are those of economic importance and are regionally abundant, and C listed weeds are wide spread with known economic impacts. Weeds were mapped in the field and GIS data uploaded and maps created documenting the occurrences of each weed species, if they were treated or not, and estimated patch size and density for each occurrence. Documentation of these noxious weeds provides valuable information on weed distribution and the scope of resource concerns to be addressed with future grant funding. In December the Watershed Council applied for an Oregon State Weed Board Grant to treat noxious weeds found during these surveys in the Lower Grass Valley Canyon using herbicide and biological control treatments and will know later this spring if funded.



# Experiment Station Weather

## Air Temperature

Month	Average Max Temp °F	Average Min Temp °F
November 2018	52	26
November average	48	30
December 2018	42	30
December average	38	24

### November

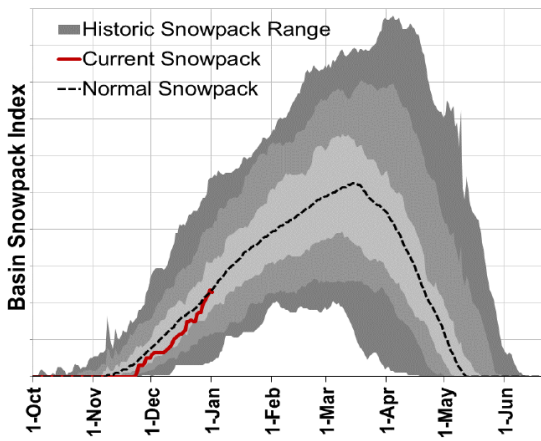
The highest temperature was 61°F on the 6th  
The lowest temperature was 17°F on the 14th

### December

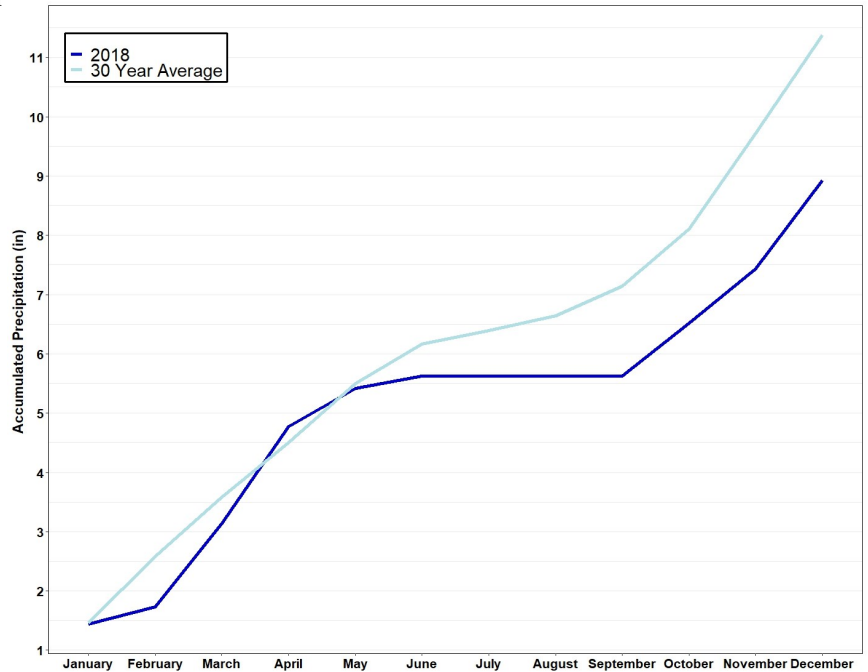
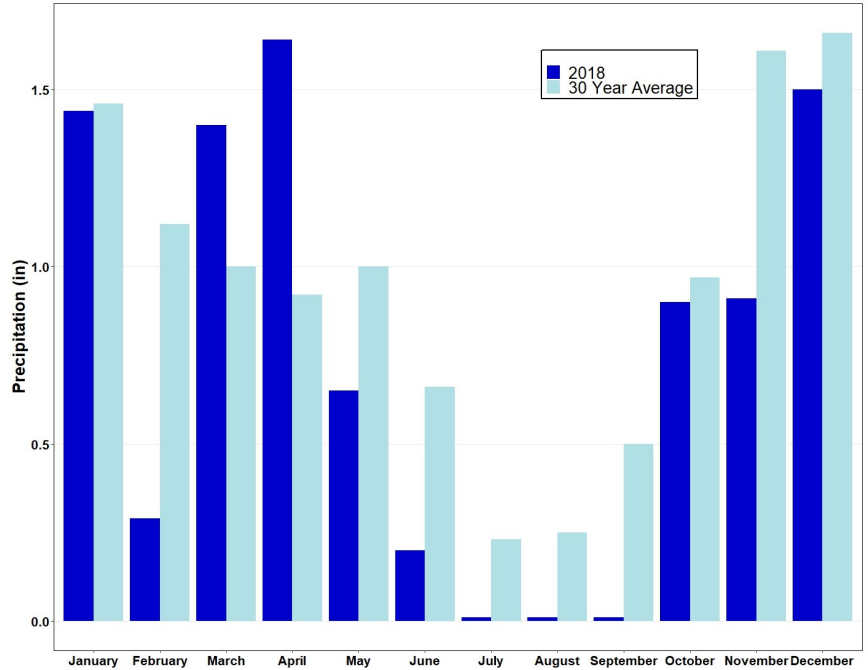
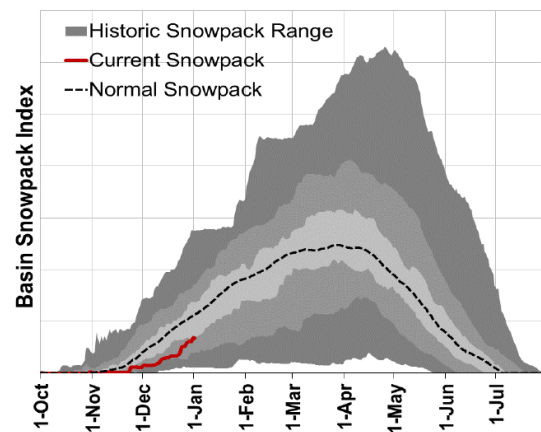
The highest temperature was 51°F on the 29th  
The lowest temperature was 21°F on the 3rd

**Snowpack:** John Day Basin is at 96% of normal and December precip at 88% of average. Hood, Sandy, and Lower Deschutes, are at 63% of normal and December precip at 103% of average.

### John Day Basin Mountain Snowpack

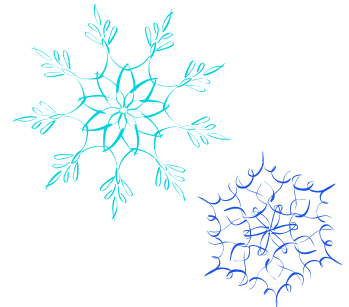


### Hood, Sandy, and Lower Deschutes Basins



## Soil Temperature

Month	4" max	4" min	12"
November	44°F	41°F	42°F
December	41°F	39°F	41°F



# Lower John Day Working Group Meeting

**Meeting:** The Lower John Day Working Group will meet on **Tuesday, January 29th from 10:00 am to 2:00 pm** at the South Gilliam Emergency Services Building in Condon, OR. Lunch will be provided. If your not able to make it you can join the meeting from your computer, tablet or smartphone: [https://www.gotomeet.me/Gilliam\\_County\\_SWCD](https://www.gotomeet.me/Gilliam_County_SWCD) or dial in using your phone: United States: +1 (872) 240-3212, Access Code: 385-955-045. We will be discussing the Step 3 budget, landowner and city government outreach, Step 2 report edits and adopting the final draft of the report, as well as planning the February meeting with a special focus on the Step 3 subcommittees. We will also be hearing from Chris Fitzsimmons (Gilliam) and Shawn Payne (Sherman) on their counties' Natural Hazard Mitigation Plans. Your participation is important and greatly appreciated!



**Background:** Place Based Planning began with the Oregon Legislature, the Water Resources Commission, and the Oregon Water Resources Department. They led the development of the state's first Integrated Water Resource Strategy (IWRs). The Department worked closely with the Oregon Department of Fish and Wildlife, Oregon Department of Environmental Quality, and the Oregon Department of Agriculture during its development. A "place-based" integrated water resources planning approach is a tool for Oregon communities to achieve that level of coordination, by collaboratively developing a shared vision for the future, and anticipating the need to address specific water-related challenges. In 2016 the Gilliam County Soil and Water Conservation District, on behalf of the Lower John Day Working Group, applied for and was awarded a grant from the Oregon Water Resources Department to engage in a collaborative water planning effort to prioritize and address water challenges and plan for a sustainable water future. Place-Based Planning is a five-step planning process. Through this effort we will identify regional solutions to efficiently develop, conserve, store and utilize water to meet both instream and out-of-stream needs. The steps are as follows: 1) Build a Collaborative and Integrated process, 2) Characterize Water Resources, Water Quality, and Ecological Issues, 3) Quantify Existing and Future Needs/Demands, 4) Develop Integrated Solutions for Meeting Long-Term Water Needs, 5) Adopt the Plan. We are currently working on Step 3, examining current and future instream and out-of-stream water needs in the Lower John Day Basin, and will be seeking landowner input and feedback on solutions to meet those needs.

## Local Advertisements

**M.C.G.G.**  
**Morrow County Grain Growers Inc.**

Wasco: 1-800-824-7185  
Lexington: 1-800-452-7396  
Fax: 541-442-5780

[www.mcgg.net](http://www.mcgg.net)

**BUSINESS OWNERS!!!!**

Are you interested in showcasing your business cards in our newsletter? Advertisements are \$20 per issue or \$75 for the year! Issues are dispersed quarterly. For those of you who previously advertised, if you haven't renewed don't get left out! Call our office today!

**Bank of Eastern Oregon**

**AMY MCNAMEE**  
Commercial Loan Officer

Office (541) 565-3712 P.O. Box 444  
Fax (541) 565-3470 Moro, OR 97039  
[amcnamee@beobank.com](mailto:amcnamee@beobank.com) [www.beobank.com](http://www.beobank.com)

**Mobley Fencing, LLC**  
CCB #165680

Livestock Fencing • Chain Link  
Vinyl Fencing • Steel Fencing  
Retaining Walls

**Ron Mobley, owner**

P.O. Box 362 541.333.2224  
Kent, OR 97033 [rmobley@gorge.net](mailto:rmobley@gorge.net) Cell 541.980.2716

**DEGRANGE Construction, LLC.**

OR LIC# 161930  
WA LIC# DEGRACL961R3

Ken DeGrange cell: (541) 993-0442  
Mike DeGrange cell: (541) 993-1963

office: (541)442-5712 • fax: (541)442-8588  
PO BOX 222 • Wasco, OR 97065 • [dd@saw.net](mailto:dd@saw.net)

**Mid Columbia Producers, Inc.**  
[www.mcpcorp.com](http://www.mcpcorp.com)  
[contactmcp@mcpcorp.com](mailto:contactmcp@mcpcorp.com) Supervised Fuels

Grain \* Fuel \* Oil \* Seed \* Farm Stores

Mid Columbia Producers, inc. operates three offices to better serve our customers. Our main office is located in Moro, Oregon.

Moro Office | 2003 First Street | Moro, OR 97039 | 800-325-9327  
Bend Office | 913 1st Street | Bend, OR 97701 | 888-616-0690  
Hermiston Office | 345 N 1st Pl | Hermiston, OR 97838 | 541-289-5015

Your Business  
Advertised Here

Contact Sherman County  
SWCD at 541-565-3216

**SWCD**  
EST. 1950

**DELCO EXCAVATION, LLC**

**GRANT DELCO**  
541.980.8844

CCB #186164  
DEQ SEPTIC LICENSE #38758

For All Your  
Excavation Needs

## ~ CONSERVATION CALENDAR ~

### January 21: Martin Luther King Jr. Day - Office Closed

January 24: North Central Livestock Association Meeting, Grass Valley Store, 6:00 pm

January 25: Dunn Carney Ag Summit, Salem Convention Center, 7:30 am - 1:30 pm

January 28: Farm Bureau Legislative Reception for lawmakers and the public, State Capitol, 10 am - 3 pm

January 29: Lower John Day Working Group Meeting, Condon Emergency Services Building, 10 am - 2 pm

February 4: Wasco/Sherman County Oregon Wheat Grower's League Workshop and Dinner, The Dalles

**February 12: Watershed Council Meeting, Sherman SWCD office, 8:00 a.m.**

**February 12: SWCD Board Meeting, Sherman SWCD office, 8:30 a.m.**

**February 12: Sherman County SWCD Annual Meeting, Wasco Event Center, 5:30 pm Social, 6:00 pm Dinner**

February 15: North Central Livestock Association Annual Meeting, Riverside in Maupin, 6:00 pm

**February 18: Presidents Day - Sherman SWCD Office Closed**

February 23: OSU's Oregon Small Farms Conference in Corvallis

February 28: Lower John Day Ag Water Quality LAC Biennial Review, Moro OSU Extension Office, 10:00 am

March 1: Pre-Order deadline for Sherman County SWCD tree sale

March 23: Sherman County SWCD Tree Sale, Sherman SWCD Office, 8:00 am -12:00 pm

## ~ BOARD & STAFF ~

### SWCD Staff

Amanda Whitman, District Manager

Jacob Powell, Watershed Council Coordinator

Scott Susi, Conservation Technician

### NRCS Staff

Del Rae Ferguson, Acting District Conservationist

Emily Huth, Soil Conservationist

### Sherman County SWCD Board of Directors

Jesse Stutzman, Chair

Josh Hilderbrand, Vice Chair

Clint Moore, Treasurer

Thad Eakin, Secretary

Trevor Fields, Member



We're on the Web! Don't forget to check us out for current news!  
[www.shermancountyswcd.com](http://www.shermancountyswcd.com) and [www.shermancountywc.com](http://www.shermancountywc.com)

We're also on Facebook!



The U.S. Department of Agriculture (USDA) prohibits discrimination in all its programs and activities on the basis of race, color, national origin, age, disability, and where applicable, sex, marital status, familial status, parental status, religion, sexual orientation, genetic information, political beliefs, reprisal, or because all or a part of an individual's income is derived from any public assistance program. (Not all prohibited bases apply to all programs.) Persons with disabilities who require alternative means for communication of program information (Braille, large print, audiotape, etc.) should contact USDA's TARGET Center at (202)720-2600 (voice and TDD). To file a complaint of discrimination write to: USDA, Director, Office of Civil Rights, 1400 Independence Avenue, S.W., Washington, D.C. 20250-9410 or call (800)795-3272 (voice) or (202)720-6382 (TDD). USDA is an equal opportunity provider and employer.

PERMIT # 15  
MORO, OR 97039  
US POSTAGE PAID  
NONPROFIT ORG

Moro, OR 97039  
P.O. Box 405  
Sherman County SWCD