

THE ROLLING THUNDER



October 2023

SHERMAN COUNTY SWCD & WATERSHED COUNCIL

Soil & Water Conservation District

Upcoming Meetings

The next SWCD meeting is October 10th at 8:30 am in the USDA Service Center Conference Room at 2004 First St. in Moro.

County Cost Share

The SWCD has County Cost Share (CCS) grants still available! CCS funds conservation projects in crop, range, and/or riparian areas. We have made some changes to our CCS program. Haul roads and boundary fence are no longer limited by product/distance. You can now apply for those projects the same as the other projects. Eligible projects include **cross and border fencing, haul roads, spring development, solar water development, weed treatment, range seeding, riparian restoration, and more.** Projects up to \$10,000 have a 75% cost share rate and projects \$10,001-\$15,000 have a 50% cost share rate. Our completion deadline for all CCS projects is now 2 years from the date of approval. Call the SWCD at 541-705-5070 to learn more or to apply. There is no deadline to apply. Applications are reviewed every month at SWCD board meetings.



Sherman County Area Watershed Council

Upcoming Meetings

The next Watershed Council meeting is December 12th at 8 am in the USDA Service Center Conference Room.

Small Grant Funding Available!

We have Oregon Watershed Enhancement Board (OWEB) funding available. Projects up to \$10,000 have a 75% cost share and projects \$10,001- \$15,000 have a cost share of 50%.

Eligible projects include:

- Livestock and wildlife water developments
- Range seeding
- Riparian planting
- In-stream restoration
- Cross fence
- Cropland erosion control



Large Grant Funding Available!

If you have Grant funding needs that exceed the amount of the small grant funds, please give us a call to discuss Large Grant funding options.

How to Reach Us

New USDA Service Center: Sherman County is getting a new USDA Service Center in Moro! The USDA Service Center houses Farm Service Agency (FSA), Natural Resource Conservation Services (NRCS), Sherman County Soil & Water Conservation District (SWCD), and Sherman County Area Watershed Council. For many years the Service Center operated out of the old Moro Grade School. After over a year of being displaced, all four agencies will be under one roof again. The new USDA Service Center is located at 2004 First St in Moro, just down the hill from the OSU Extension Office. We will be working on getting moved in the first week of October so please give us time to get settled. We will be having an Open House at a later date for you to come by and see the new office. All agencies are excited to be back together in one office, serving the landowners and producers of Sherman County!

How to reach us:

Amanda Whitman - SWCD District Manager

Cell: 541-705-5070

Amanda.whitman@or.nacdn.net



Marylou Martin - SWCD Office Assistant

Cell: 541-705-5161

shermancountywc@gmail.com

Community Outreach/Sherman County Fair



SWCD and Sherman County Public/School Library hosted activities in the old beef barn at the fair. Thursday was all about pollinators. Pollinator themed books, prizes, and coloring books were given away. The kids learned about native mason bees and made homes for the friendly bees to live in. Saturday was all about making new creations out of recycled materials. It was amazing to see the awesome crafts the kids made! Thank you to Deanna Christiansen and Susan Mobley for helping the kids with their crafting.



Watershed Education Incentive Program

The Watershed Education Incentive Program is to provide financial resources for local conservation education including workshops, demonstrations and youth conservation projects; to provide technical resources for implementation of education projects that will benefit Sherman County residents and resources; and to assist with worthwhile projects that don't fit traditional funding sources.

Applicants can apply for up to \$2,000.

Past grants have included greenhouse projects, field trips, 4-H camp, Bull Tour, tree planting, chick hatching projects, and more! Call us at 541-705-5070 for more information or to apply.

Wildlife Spotlight: Chukar



The chukar partridge is an introduced species found in the dry, rimrock country of eastern Oregon. Oregon stocks originated from India and the first successful releases began in 1951. Over several decades, chukars were released into all suitable areas east of the Cascades.

Features: Chukars are brown-gray with a black stripe running across the head, through the eye, and down onto the chest. Their bills and feet are red, and their sides have white and black barring.

Large fluctuations in populations are common in the partridge family. Chukar tend to have short life spans, but have the ability to produce many young. Clutches up to 21 eggs have been observed. Even when chukar have a year of poor survival, they have the ability to repopulate fairly quickly.

Habitat: Extensive areas in eastern Oregon provide ideal habitat for chukars. Cheatgrass, an introduced plant species, was already well established through much of eastern Oregon prior to the 1950s, and provides one of the most important year-round food resources for the chukar. Their habitat is generally steep, rocky, dry, and largely unsuitable for development, agriculture, or other commercial uses except grazing. Important chukar areas in Oregon include the lower Deschutes and John Day Rivers, the Snake River, and several of its tributaries, Malheur and Owyhee River drainages, and mountain ranges including Steens, Hart, and Trout Creek mountains.

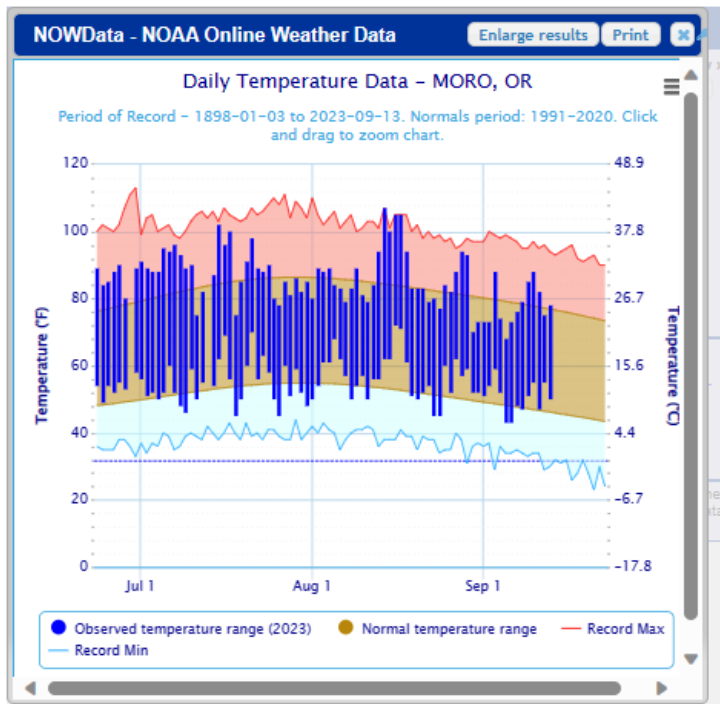
Technique: Chukars are among Oregon's most challenging birds to hunt. Good boots, a water bottle, and sufficient food and shells to stay afield all day are necessary. Binoculars are also helpful. Chukars have the disconcerting habit of running uphill, usually faster than a hunter can follow, and they fly downhill at high speed. Hunters soon learn that the best way to get within range is to approach from above or on a contour.

Another remarkable quality of chukar is their ability to survive on the seemingly limited food resources of the high desert. One study of eastern Oregon chukar found cheatgrass seeds in 88% and the starchy root bulbs of the prairie star (*Lithophragma sp.*) in 46% of chukar crop contents. Learning to identify prairie star could make you a better chukar hunter!

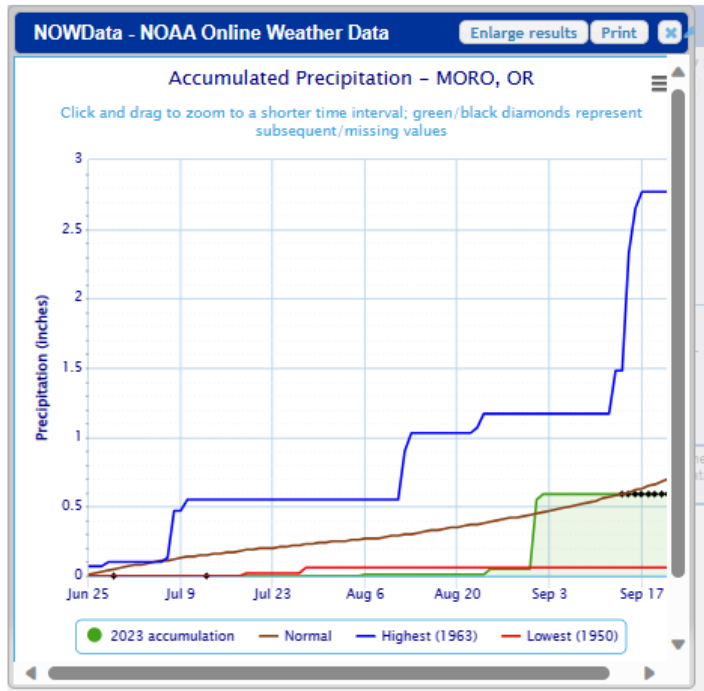
Moro Weather

Precipitation

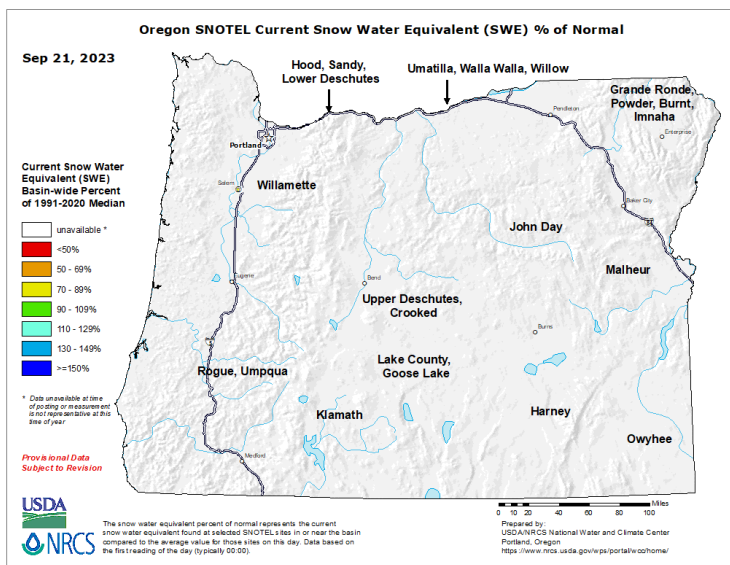
Daily Temperature Data Moro, OR



Accumulated Precipitation Moro, OR



Snow Pack



Drought Monitor

U.S. Drought Monitor Oregon

September 19, 2023
(Released Thursday, Sep. 21, 2023)
Valid 8 a.m. EDT

	Drought Conditions (Percent Area)					
	None	D0-D4	D1-D4	D2-D4	D3-D4	D4
Current	24.13	75.87	54.18	27.04	6.40	0.00
Last Week 09-12-2023	24.13	75.87	56.11	19.63	0.00	0.00
3 Months Ago 06-20-2023	23.16	76.84	39.93	7.02	0.00	0.00
Start of Calendar Year 01-03-2023	13.46	86.54	59.75	46.03	28.18	1.40
Start of Water Year 09-27-2022	0.42	99.58	68.05	52.42	30.73	1.40
One Year Ago 09-20-2022	11.67	88.33	68.05	52.22	30.73	1.40

Intensity:
 None
 D0 Abnormally Dry
 D1 Moderate Drought
 D2 Severe Drought
 D3 Extreme Drought
 D4 Exceptional Drought

The Drought Monitor focuses on broad-scale conditions. Local conditions may vary. For more information on the Drought Monitor, go to <https://droughtmonitor.unl.edu/About.aspx>

Author:
Richard Heim
NCEI/NOAA



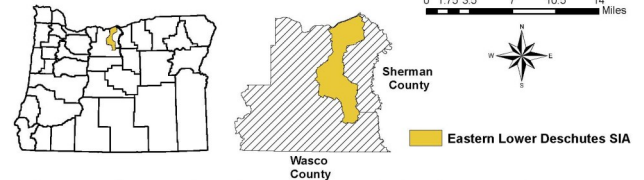
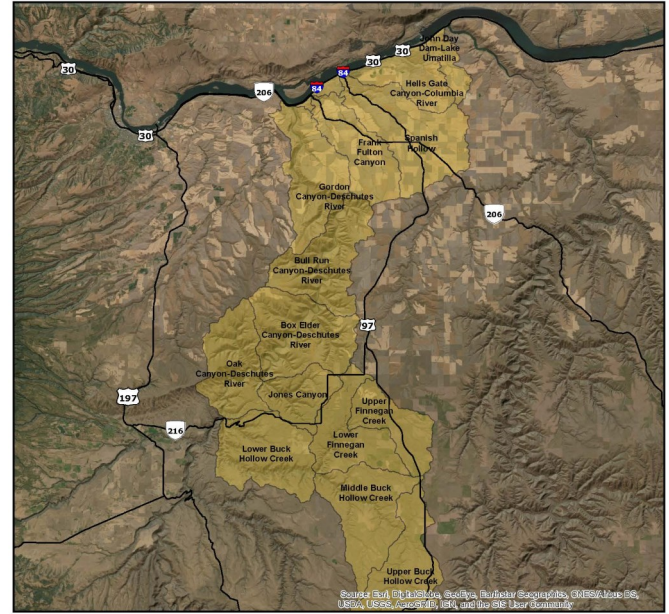
droughtmonitor.unl.edu

Eastern Lower Deschutes Strategic Implementation Area (SIA)

The Eastern Lower Deschutes watershed has been selected by the Oregon Department of Agriculture (ODA) as one of their Strategic Implementation Areas. This is a program in which ODA evaluates agricultural activities across the state to identify opportunities to improve water quality.

Over the last year, ODA has been working with landowners to improve areas of their land. There is a virtual open house to provide information about the SIA and what it means for you and your property. You can watch the Virtual Open House at this link: <https://www.youtube.com/watch?v=6dRdZrBEN4E>.

If you have land in the SIA area and are interested in implementing conservation projects there is funding available through the SWCD and NRCS. For assistance, please call the ODA at (503) 931-1754 and ask to speak to a Theresa DeBardelaben. You may also e-mail questions or concerns to tdebardelaben@oda.state.or.us or the Sherman Soil and Water Conservation District (SWCD) at (541)-705-5070 or visit www.shermancountyswcd.com for funding and project information.



Eastern Lower Deschutes Strategic Implementation Area



Local Advertisements

BUSINESS OWNERS!!!!

Are you interested in showcasing your business cards in our newsletter?

Advertisements are \$20 per issue or \$75 for the year! Issues are dispersed quarterly. For those of you who previously advertised, if you haven't renewed don't get left out! Call our office today!

MCP Mid Columbia Producers, Inc.
www.mcpcoop.com
contactmcp@mcpcoop.com
 Grain * Fuel * Oil * Seed * Farm Stores
 Mid Columbia Producers, Inc. operates three offices to better serve our customers. Our main office is located in Moro, Oregon.
 Moro Office | 2003 First Street | Moro, OR 97039 | 800-325-9327
 Bend Office | 913 1st Street | Bend, OR 97701 | 888-616-0690
 Hermiston Office | 345 N 1st Pl | Hermiston, OR 97838 | 541-289-5015

Rainmaker Wildlife
 Contact for Guzzlers
 Tyler Hansell
 Phone: 541-561-4097
 77398 County Road
 Hermiston, OR 97838

DEGRANGE Construction, LLC.
 OR LIC# 161930
 WA LIC# DEGRACL961R3
 Ken DeGrange
 cell: (541) 993-0442
 Mike DeGrange
 cell: (541) 993-1963
 office: (541) 442-5712 • fax: (541) 442-8588
 PO BOX 222 • Wasco, OR 97065 • dcl@saw.net

M.C.G.G. Morrow County Grain Growers, Inc.

 Wasco: 1-800-824-7185
 Lexington: 1-800-452-7396
 Fax: 541-442-5780
www.mcgg.net

Bank of Eastern Oregon

 Phone: 541-565-3712
 508 Main Street
 Moro, Oregon 97039

Your Business Advertiser Here
 Contact Sherman County SWCD at 541-565-3216

~ CONSERVATION CALENDAR ~

October 9: Columbus Day, office closed

October 10: SWCD Regular Board Meeting, 8:30am

November 10: Veterans Day observed, office closed

November 14: SWCD Regular Board Meeting, 8:30am

November 23: Thanksgiving Day, office closed

December 12: Watershed Counsel meeting, 8:00am- SWCD Regular Board Meeting, 8:30am

December 25: Christmas Day, office closed

~ BOARD & STAFF ~

SWCD Staff

Amanda Whitman, District Manager

Marylou Martin, Office Assistant

Vacant, Watershed Coordinator

Vacant, Watershed Technician

NRCS Staff

Misty Strayhorn, District Conservationist

Becky Hilderbrand, Conservation Technician

Sherman County SWCD Board of Directors

Jesse Stutzman, Chair

Josh Hilderbrand, Vice Chair

Clint Moore, Treasurer

Trevor Fields, Secretary

Nick Von Borstel, Member

"I sit beside the fire and think / Of all that I have seen / Of meadow flowers and butterflies / In summers that have been / Of yellow leaves and gossamer / In autumns that there were / With morning mist and silver sun / And wind upon my hair." — J.R.R. Tolkien

We're on the Web! Don't forget to check us out for current news! www.shermancountyswcd.com

We're also on Facebook!

The U.S. Department of Agriculture (USDA) prohibits discrimination in all its programs and activities on the basis of race, color, national origin, age, disability, and where applicable, sex, marital status, familial status, parental status, religion, sexual orientation, genetic information, political beliefs, reprisal, or because all or a part of an individual's income is derived from any public assistance program. (Not all prohibited bases apply to all programs.) Persons with disabilities who require alternative means for communication of program information (Braille, large print, audiotape, etc.) should contact USDA's TARGET Center at (202)720-2600 (voice and TDD). To file a complaint of discrimination write to USDA, Director, Office of Civil Rights, 1400 Independence Avenue, S.W., Washington, D.C. 20250-9410 or call (800)795-3272 (voice) or (202)720-6382 (TDD). USDA is an equal opportunity provider and employer.

NONPROFIT ORG
US POSTAGE PAID
MORO, OR 97039
PERMIT # 15

Sherman County SWCD
P.O. Box 405
Moro, OR 97039