

# THE ROLLING THUNDER



July 2023

SHERMAN COUNTY SWCD & WATERSHED COUNCIL

## Soil & Water Conservation District

### Upcoming Meetings

The next SWCD meeting is September 12 at 8:30 am in the OSU Extension Conference Room.

### County Cost Share

The SWCD has county cost share grants still available! County cost share funds conservation projects in crop, range, and/or riparian areas. Eligible projects include **cross and border fencing, haul roads, spring development, solar water development, weed treatment, range seeding, riparian restoration, and more.** Projects up to \$10,000 have a 75% cost share rate and projects \$10,001-\$15,000 have a 50% cost share rate. Projects must be completed within 2 years. Call the SWCD at 541-705-5070 to learn more or to apply. There is no deadline to apply. Applications are reviewed every month at SWCD board meetings.



## Sherman County Area Watershed Council

### Upcoming Meetings

The next Council meeting is December 13th at 8 am at the OSU Extension Conference Room.

### Small Grant Funding Available!

We have Oregon Watershed Enhancement Board (OWEB) funding available. Projects up to \$10,000 have a 75% cost share and projects \$10,001- \$15,000 have a cost share of 50%.

Eligible projects include:

- Livestock and wildlife water developments
- Range seeding
- Riparian planting
- In-stream restoration
- Cross fence
- Cropland erosion control

### Large Grant Funding Available!

If you have Grant funding needs that exceed the amount of the small grant funds, please give us a call to discuss Large Grant funding options.



## How to Reach Us

The Sherman County SWCD and the Sherman County Area Watersheds Council are housed in the OSU Extension Office in Moro at 66365 Lone Rock Rd. Moro, OR 97039. Come by and say hi during business hours, Monday through Friday 8:00 a.m. to 4:30 p.m.

### New Building:

The anticipated move-in date for the new building is late fall, 2023. This building will house FSA, NRCS, and SWCD together once again! We will announce the exact date as soon as we have more information.



### How to reach us:

Amanda Whitman - SWCD District Manager

Cell: 541-705-5070

[Amanda.whitman@or.nacdn.net](mailto:Amanda.whitman@or.nacdn.net)

Marylou Martin - SWCD Office Assistant

Cell: 541-705-5161

[shermancountywc@gmail.com](mailto:shermancountywc@gmail.com)



# Farm Service Agency

The Sherman County FSA office is still co-located in The Dalles at 2325 River Rd, Suite 4 (the far East entrance). You can reach us at 541-298-8559

- \*Kara - Extension 130      \*Kayci - Extension 131      \*Kayla - Extension 132

Please call and make an appointment to conduct your business, as we may not always be in the office.

## Important Dates:

- **August 1** - Last day to submit nomination for county committee election
- **CRP (Conservation Reserve Program)**
  - Please complete your mid-contract management activities and submit your completion date and information to FSA
  - Primary Nesting Season of ground nesting birds began March 1st and ends **July 15th**. Please limit activities on established CRP stands to avoid nest disturbance.

**Emergency Grazing of CRP** - Sherman County is eligible for Emergency Grazing on CRP acreage due to ongoing drought conditions. The Emergency Grazing **REQUEST MUST be approved before livestock can be turned out**. There are very specific limitations for grazing during the Primary Nesting Season. Please contact the Sherman County Staff to begin the process of approval for grazing. **DO NOT turn your livestock out on CRP until you have verbal and/or written permission from FSA.**

## Farm Service Agency Now Accepting Nominations for Farmers and Ranchers to Serve on Local County Committees

The U.S. Department of Agriculture (USDA) is now accepting nominations for county committee members for elections that will occur later this year. Additionally, USDA's Farm Service Agency (FSA) is unveiling a new GIS tool to make it easier for producers to participate in the nomination and election processes for county committee members, who make important decisions on how federal farm programs are administered locally.

All nomination forms for the 2023 election must be postmarked or received in the local FSA office by Aug. 1, 2023.

Agricultural producers may be nominated for candidacy for the county committee if they:

- Participate or cooperate in a USDA program; and
- Reside in the LAA that is up for election this year.

### **More Information**

Producers should contact their local FSA office today to register and find out how to get involved in their county's election, including if their LAA is up for election this year. To be considered, a producer must be registered and sign an [FSA-669A](#) nomination form. These forms and other information about FSA county committee elections are available at [fsa.usda.gov/elections](https://fsa.usda.gov/elections).

Election ballots will be mailed to eligible voters beginning Nov. 6, 2023.

For 2023, the Sherman COC will be accepting nominations for the LAA-2 (Moro and outlying area).



# Farm Service Agency (Continued)



## Sherman County Qualifies for Disaster Assistance for 2023 Livestock Forage Losses

Producers in Sherman County are eligible to apply for 2023 Livestock Forage Disaster Program (LFP) benefits on small grain, native pasture, improved pasture, annual ryegrass, forage sorghum.

LFP provides compensation if you suffer grazing losses for covered livestock due to drought on privately owned or cash leased land or fire on federally managed land.

County committees can only accept LFP applications after notification is received by the National Office of qualifying drought or if a federal agency prohibits producers from grazing normal permitted livestock on federally managed lands due to qualifying fire. You must complete a CCC-853 and the required supporting documentation no later than January 30, 2024, for 2023 losses.

For additional information about LFP, including eligible livestock and fire criteria, contact the Sherman County USDA Service Center at 541-298-8559 ext 130 or visit [fsa.usda.gov](https://fsa.usda.gov).

## Sherman County SWCD Scholarship

The Sherman County SWCD Board was pleased to award five \$1,500 scholarships this spring to these students: Allie Marker, Kenneth Berry, Kole Martin, Logan Barrett, and Natalie Martin.

All of these students have met the following criteria in order to be eligible for this scholarship:

Graduate of Sherman County School District

Be a current high school senior or enrolled in trade school or college/university

Have chosen a career in some area of agriculture or vocational education

Hold a minimum GPA of 2.5

## Odds and Ends

**Range Drill:** A Range Drill is available to landowners/operators to rent from the SWCD. It's primary function is to be able to accurately apply grass seed to rangeland areas that are too difficult for standard equipment, but it can be used to enhance existing pastures, improve decadent grass stands, or establish food plots. The drill is capable of applying any size of grass or grain seed at a 10 ft width on 12 inch spacing. It weighs approximately 4,000 lbs and is capable of being pulled with a standard three quarter ton pickup over most moderate terrain. If you would like to rent the range drill call the office (541-705-5070) to make an appointment.



**Sherman County Crop Tour presented by Oregon State University Extension Service:** SWCD attended the crop tour on Thursday, June 1. Stops included winter wheat biofertilizer trials, CoAXium soft white wheat, and using sunflowers to reduce compaction following wind energy development. Also, Cat Salois with McGregor gave a tour of the MCP/McGregor seed treatment and wheat variety trials. Lunch was provided at the end of the tour. Sponsors included Oregon State University Extension Service, BASF, Wheatland Insurance Center, Inc., Sherman County SWCD, AgWest Farm Credit, Wasco County Conservation District, and Mid Columbia Producers Inc.



# Watershed Education Incentive Program

**SWCD was very excited to award 3 grants this year for local conservation education:**

**Ashley Macnab's kindergarten class received a grant for a Stem Exploration Station.** Activities include exploring water flow, sinking or floating, and mini lessons on erosion. The pump watering system shows conservation of water. The class also plans on creating and building different habitats for animals.. The kids were so excited and couldn't wait for their turn at the station. They also got to explore using the microscope and look at bee wings and flower petals. The Station was also used as an art table when the lid was on. Mrs. Macnab reported that the outcome was very positive this year and they are very excited for next year when they can really dive into using this!



**SWCD funded a grant to Sherman County Prevention to purchase supplies for plants, flowers, rocks, potting soil, and planters.** The OYCC crew will add the planters to each of the Senior Center housing units and the flowers to other places in the community this summer.



**SWCD partially funded Sherman County 4-H Day Camp for youth in 4th, 5th, and 6th grades..** This year it was at Brooks Memorial Retreat Center on June 20 and 21 in Goldendale, Washington. Activities included swimming at Goldendale pool, songs and skits, counselor hunt, "capture the flag", all camp field games & "messy games", dance party, hiking, volleyball, basketball, softball, and natural resource based classes and crafts. Tuesday, SWCD presented a lesson and crafting on "pollinators" .



# Community Outreach at Sherman County Public/School Library



SWCD was invited to the “Community Helpers” summer reading program at the Library on June 27. Community members from the Moro Fire Department (John Barber and Joe Belshe), Emergency Medical Responder (Jennifer Smith), and Undersheriff (James Burgett) all spoke to the kids about their important jobs in the community. Later, everyone went outside to get a tour of the emergency vehicles. After snack time, several kids enjoyed experimenting with the Watershed Model.



## Oak Springs Fish Hatchery trip

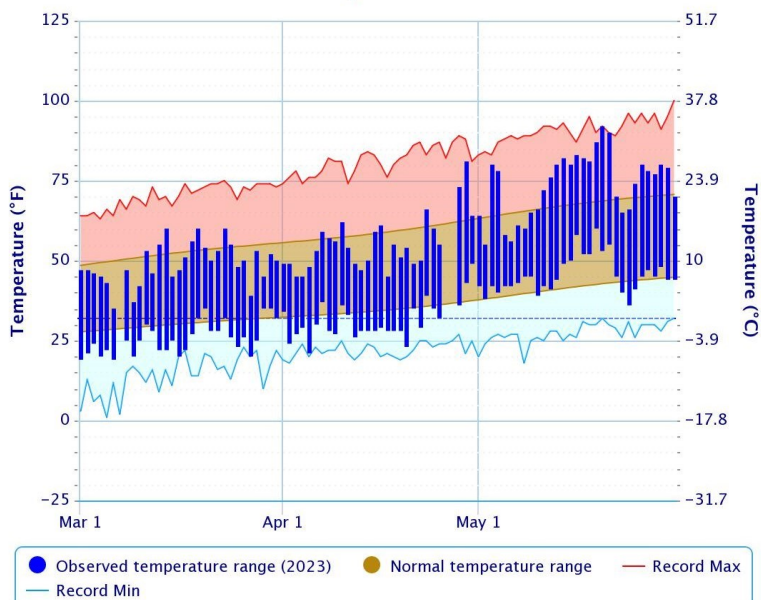
**Mrs. Jones’ 5th grade class hatchery trip:** Marylou was very excited to tag along with the 5th grade class to the fish hatchery in Maupin (bus ride and all). It was a perfect day to be outside and learn about raising fish. After viewing the tanks and learning about the process of hatching eggs, importance of temperature, feeding methods, etc., the students got to take turns clipping fins off of the small fish. A nice relaxing lunch by the small pond and picnic area finished off the trip.



# Moro Weather

## Precipitation

Daily Temperature Data Moro, OR

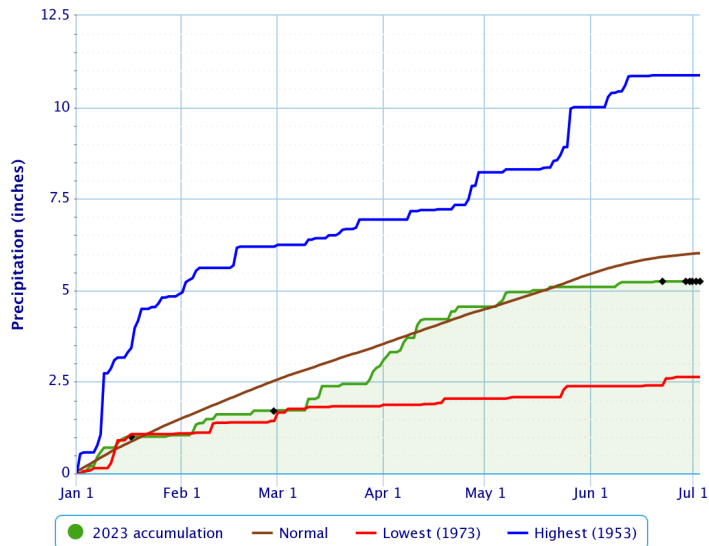


Powered by ACIS

Accumulated Precipitation Moro, OR

Accumulated Precipitation – MORO, OR

Click and drag to zoom to a shorter time interval; green/black diamonds represent subsequent/missing values



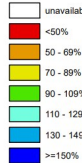
Powered by ACIS

## Snow Pack

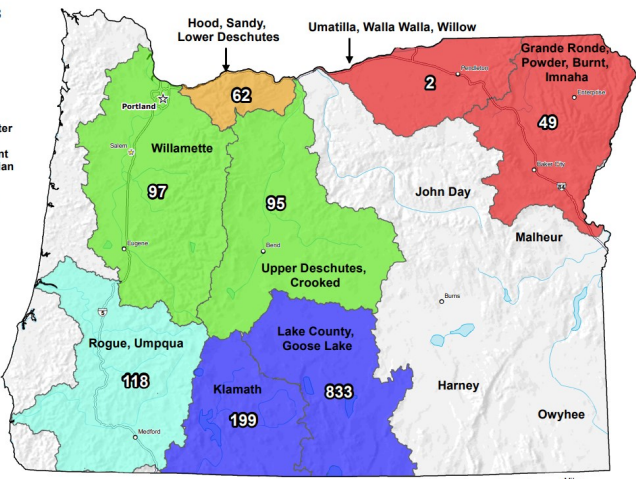
Oregon SNOTEL Current Snow Water Equivalent (SWE) % of Normal

Jun 07, 2023

Current Snow Water Equivalent (SWE) Basin-wide Percent of 1991-2020 Median



\* Data unavailable at time of posting or measurement is not representative at this time of year.  
Provisional Data Subject to Revision



The snow water equivalent percent of normal represents the current snow water equivalent found at selected SNOTEL sites in or near the basin compared to the average value for those sites on this day. Data based on the first reading of the day (typically 00:00).

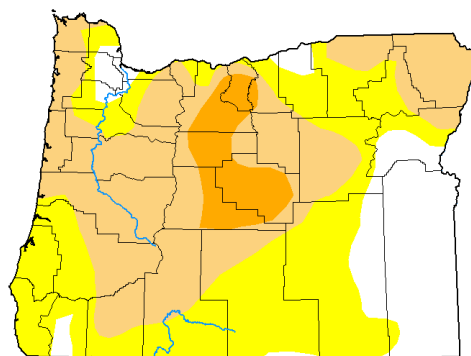
Prepared by: USDA/NRCS National Water and Climate Center Portland, Oregon <https://www.nrcs.usda.gov/wps/portal/wc/home/>



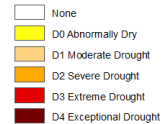
## Drought Monitor

U.S. Drought Monitor Oregon

June 27, 2023  
(Released Thursday, Jun. 29, 2023)  
Valid 8 a.m. EDT



Intensity:



The Drought Monitor focuses on broad-scale conditions. Local conditions may vary. For more information on the Drought Monitor, go to <https://droughtmonitor.unl.edu/About.aspx>

Author:

Curtis Riganti  
National Drought Mitigation Center



droughtmonitor.unl.edu

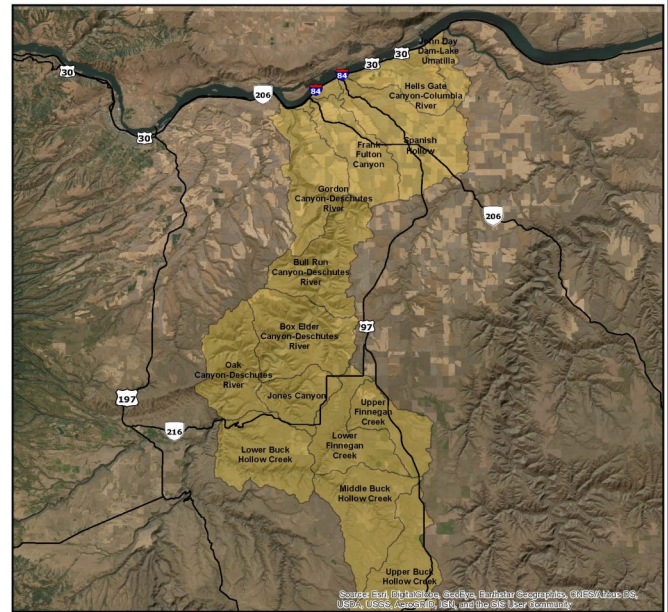
# Eastern Lower Deschutes Strategic Implementation Area (SIA)

The Eastern Lower Deschutes watershed has been selected by the Oregon Department of Agriculture (ODA) as one of their Strategic Implementation Areas. This is a program in which ODA evaluates agricultural activities across the state to identify opportunities to improve water quality.

After the evaluation, those owning agricultural lands within the selected watershed are usually invited to an open house where ODA would have met landowners in person and discussed the SIA initiative, shared results, and provided information and resources, but were unable to due to COVID-19 restrictions for indoor public gatherings.

ODA recently recorded a virtual open house to provide information about the SIA and what it means for you and your property. The ODA hopes to be able to host an in person open house in the near future. Until then you can watch the Virtual Open House at this link: <https://www.youtube.com/watch?v=6dRdZrBEN4E>

For assistance, please call the ODA at (503) 931-1754 and ask to speak to a Theresa DeBardelaben. You may also e-mail questions or concerns to [tdebardelaben@oda.state.or.us](mailto:tdebardelaben@oda.state.or.us) or the Sherman Soil and Water Conservation District (SWCD) at (541)-705-5070 or [www.shermancountyswcd.com](http://www.shermancountyswcd.com)



0 1.75 3.5 7 10.5 14 Miles



Eastern Lower Deschutes SIA

Eastern Lower Deschutes Strategic Implementation Area



## Local Advertisements

### BUSINESS OWNERS!!!!

Are you interested in showcasing your business cards in our newsletter?

Advertisements are \$20 per issue or \$75 for the year! Issues are dispersed quarterly. For those of you who previously advertised, if you haven't renewed don't get left out! Call our office today!

**MCP Mid Columbia Producers, Inc.**  
[www.mcpcoop.com](http://www.mcpcoop.com)  
[contactmcp@mcpcoop.com](mailto:contactmcp@mcpcoop.com) SuperSeed Fuels  
 Grain \* Fuel \* Oil \* Seed \* Farm Stores

Mid Columbia Producers, Inc. operates three offices to better serve our customers. Our main office is located in Moro, Oregon.

Moro Office | 2003 First Street | Moro, OR 97039 | 800-325-9327  
 Bend Office | 913 1st Street | Bend, OR 97701 | 888-616-0690  
 Hermiston Office | 345 N 1st Pl | Hermiston, OR 97838 | 541-289-5015

**Rainmaker Wildlife**

Contact for Guzzlers  
 Tyler Hansell  
 Phone: 541-561-4097  
 77398 County Road  
 Hermiston, OR 97838

**DEGRANGE Construction, LLC.**

OR LIC# 1461930  
 WA LIC# DEGRACL961R3

Ken DeGrange  
 cell: (541) 993-0442

Mike DeGrange  
 cell: (541) 993-1963

office: (541) 442-5712 • fax: (541) 442-8588  
 PO BOX 222 • Wasco, OR 97065 • [dcl@saw.net](mailto:dcl@saw.net)

**M.C.G.G. Morrow County Grain Growers, Inc.**

Wasco: 1-800-824-7185  
 Lexington: 1-800-452-7396  
 Fax: 541-442-5780

[www.mcgg.net](http://www.mcgg.net)

**Bank of Eastern Oregon**

Phone: 541-565-3712  
 508 Main Street  
 Moro, Oregon 97039

Your Business Advertiser Here

Contact Sherman County SWCD at 541-565-3216

# ~ CONSERVATION CALENDAR ~

August 12: Farmers Market

August 22-26: Sherman County Fair

Labor Day: September 4

September 9: Farmers Market

September 12: SWCD Regular Board Meeting, 8:30am

October 10: SWCD Regular Board Meeting, 8:30am



## ~ BOARD & STAFF ~

### SWCD Staff

Amanda Whitman, District Manager

Marylou Martin, Office Assistant

Vacant, Watershed Coordinator

Vacant, Watershed Technician

### NRCS Staff

Misty Strayhorn, District Conservationist

Becky Hilderbrand, Conservation Technician

### Sherman County SWCD Board of Directors

Jesse Stutzman, Chair

Josh Hilderbrand, Vice Chair

Clint Moore, Treasurer

Trevor Fields, Secretary

Nick Von Borstel, Member

*The hum of bees is the voice of the garden – Elizabeth Lawrence*

We're on the Web! Don't forget to check us out for current news! [www.shermancountyswcd.com](http://www.shermancountyswcd.com)

We're also on Facebook!

The U.S. Department of Agriculture (USDA) prohibits discrimination in all its programs and activities on the basis of race, color, national origin, age, disability, and where applicable, sex, marital status, familial status, parental status, religion, sexual orientation, genetic information, political beliefs, reprisal, or because all or a part of an individual's income is derived from any public assistance program. (Not all prohibited bases apply to all programs.) Persons with disabilities who require alternative means for communication of program information (Braille, large print, audiotape, etc.) should contact USDA's TARGET Center at (202)720-2600 (voice and TDD). To file a complaint of discrimination write to USDA, Director, Office of Civil Rights, 1400 Independence Avenue, S.W., Washington, D.C. 20250-9410 or call (800)795-3272 (voice) or (202)720-6382 (TDD). USDA is an equal opportunity provider and employer.

NONPROFIT ORG  
US POSTAGE PAID  
MORO, OR 97039  
PERMIT # 15

Sherman County SWCD  
P.O. Box 405  
Moro, OR 97039